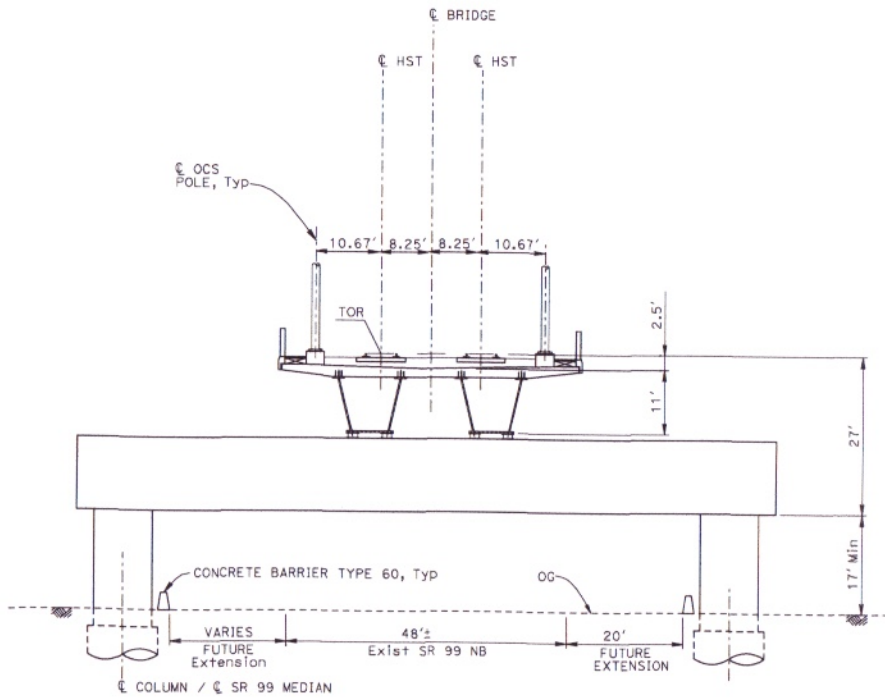
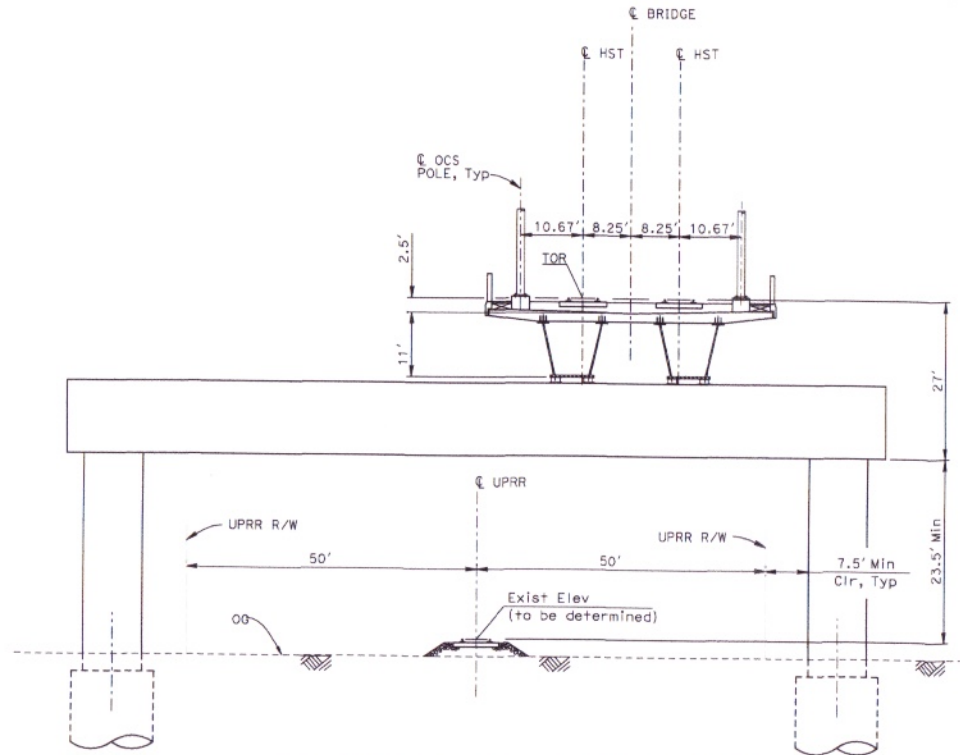


CHANGE IN TRACK STRUCTURE

ATTACHMENT 3



EL4 - DOUBLE TRACK ELEVATED CROSSING SR99



EL5 - DOUBLE TRACK ELEVATED CROSSING UPRR/BNSF

LOOKING NORTHWEST

- NOTES:
1. TRACK, OCS POLES AND FOUNDATIONS, CABLE DUCTS AND DRAINAGE ARE SCHEMATIC AND DO NOT REPRESENT DESIGN.
 2. RIGHT-OF-WAY REQUIRED FOR THE HIGH-SPEED RAIL GUIDEWAY WILL DEPEND UPON CONDITIONS ALONG THE ALIGNMENT, INCLUDING TERRAIN, WHERE CUT/FILL SLOPES, RETAINING STRUCTURES, AND ACCESS ARE REQUIRED.
 3. POTENTIAL SOUND BARRIERS NOT SHOWN IN CROSS SECTIONS. FOR THE EXTENT OF POTENTIAL SOUND BARRIERS, SEE ALIGNMENT PLAN AND PROFILE SHEETS.

7/20/2011 3:31:58 PM I:\char\60022962\Task-02_merced-fresno\cadd\civil\sheet\Trackwork\del\Typical sections\MF-T-3006-A.dgn

Shie.dwg

REV	DATE	BY	CHK	APP	DESCRIPTION

DESIGNED BY
A. SHIELDS
DRAWN BY
C. VALADAO
CHECKED BY
A. BOONE
IN CHARGE
A. BOONE
DATE
07/20/2011

RECORD SET
15% DESIGN
SUBMITTAL

NOT FOR
CONSTRUCTION



CALIFORNIA HIGH-SPEED TRAIN PROJECT
MERCED TO FRESNO

CONTRACT NO.
HSR06-007
DRAWING NO.
T3006-A
SCALE
NO SCALE
SHEET NO.
OF ###

TYPICAL SECTIONS
SHEET 6 OF 17